

PLAN EPP128625

SUBDIVISION PLAN OF LOT A AND LOT B PLAN 17758, LOT 19 PLAN 3476 EXCEPT PLAN A12943, AND LOT A PLAN KAP80294, ALL OF SECTION 26 TOWNSHIP 26 OSOYOOS DIVISION YALE DISTRICT

BCGS 82E.084



The intended plot size of this plan is 560mm in width by 432mm in height (C-size) when plotted at a scale of 1:250.

LEGEND

- Found Standard Iron Post
- Placed Standard Iron Post
- ⊙ Found Control Monument
- NSP
- Not Suitable for Posting

This plan shows one or more witness posts which are not set on the true corner(s).

Integrated Survey Area No. 4, City of Kelowna NAD83 (CSRS) 2002.0

Grid bearings are derived from GNSS observations and are referred to the central meridian of UTM Zone 11 (117° West Longitude).

The UTM coordinates and estimated absolute accuracy achieved are derived from dual frequency GNSS observations to CANNET Active Control Station BC_Kelowna.

The coordinates and absolute accuracies shown on this plan are a result of an independent and accurate GNSS survey and do not represent official published coordinates.

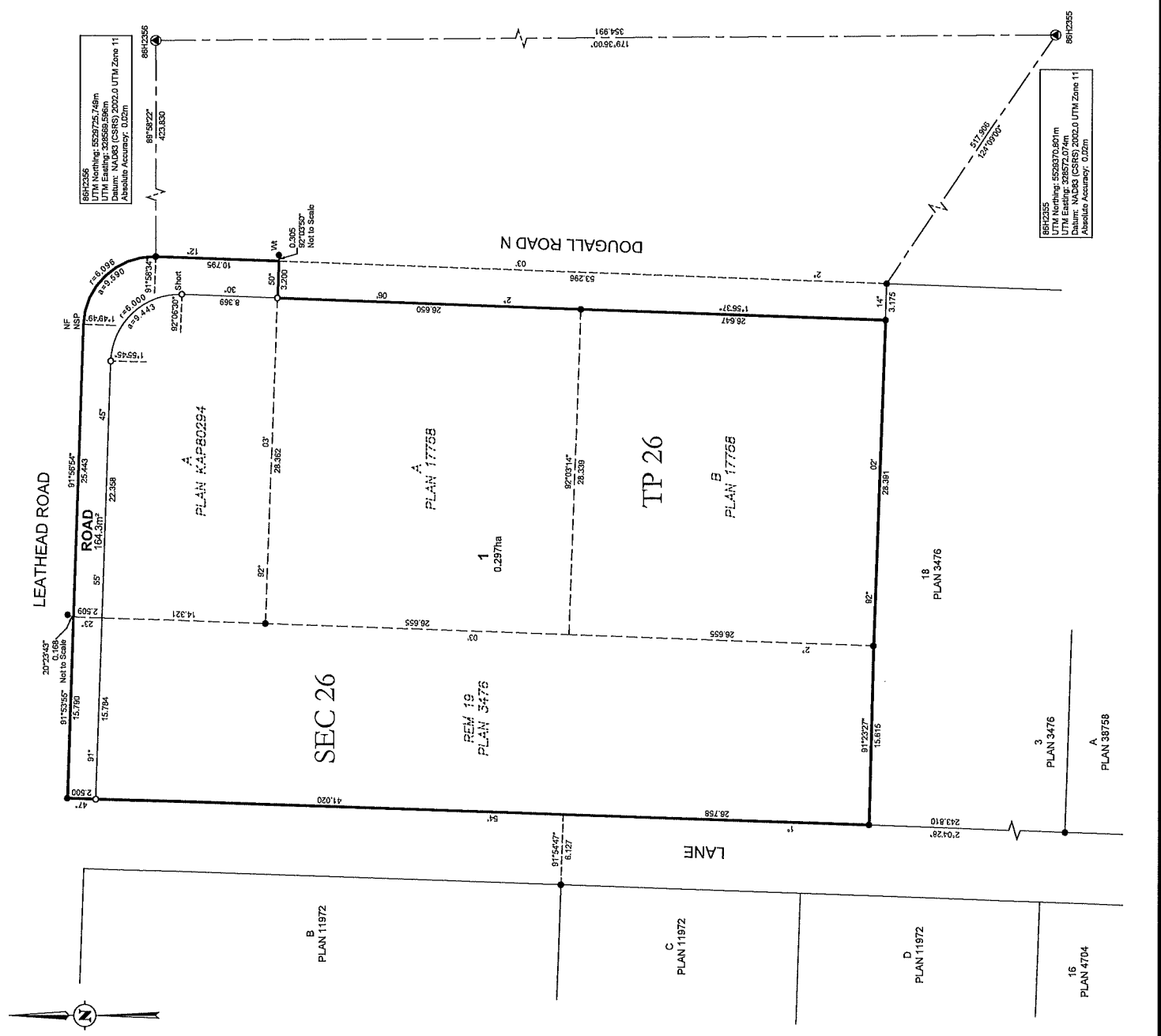
This plan shows horizontal ground-level distances, unless otherwise specified. To compute grid distances, multiply ground-level distance by the average combined factor of 0.999902. The average combined factor has been determined based on an ellipsoidal elevation of 394 metres.

This plan lies within the Regional District of Central Okanagan.

This plan lies within the jurisdiction of the Approving Officer for the City of Kelowna.

The field survey represented by this plan was completed on the 20th day of April, 2023.

Tyler Fox, BCLS 887



VECTOR
GEOMATICS LAND SURVEYING LTD.
111-810 Clement Ave
Kelowna BC V1Y 8K7
Ph: (250) 868-0172
www.vectorgeomatics.com

FILE No.: 220182690 Date: 2023-05-04 Drawn by: CM
DRAWING No.: 220182690_EPP128625 SUB RD